

Technical Data Sheet

Caution: Research use only.

AlphaLISA® SureFire® Ultra™ p-4E-BP1 (Thr37/46) Assay Kit

**Products: ALSU-P4EBP-A500, ALSU-P4EBP-A10K, ALSU-P4EBP-A50K,
ALSU-P4EBP-A-HV**

Kit-Specificity Information

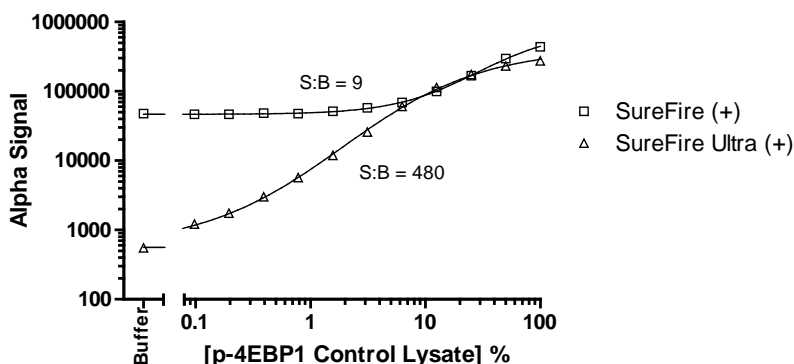
This assay kit contains antibodies which recognize the phospho-Thr37/46 epitope, and a distal epitope, on 4E-BP1. The protein detected by this kit corresponds to GenBank Accession NP_004086. 4E-BP1 is also known as BP-1, 4EBP1; PHAS-I, MGC4316 and EIF4EBP1. These antibodies recognize 4E-BP1 of human, mouse and rat origin. Other species should be tested on a case-by-case basis.

Control Lysate Information

Positive Control Lysate: Prepared from MCF7 cells, cultured to confluence in T175 flasks in 10% FBS containing medium, then treated with 500µg/mL Insulin for 30min and lysed in 20mL of 1X *SureFire Ultra* Lysis buffer.

Representative data

Data obtained with a 2-plate, 2-incubation protocol. Data shows a comparison of AlphaScreen *SureFire* and AlphaLISA *SureFire Ultra* assay performance. Control lysate was diluted in the Lysis buffer specific for the assay type.



For more information and detailed protocols, please refer to the generic AlphaLISA *SureFire Ultra* Assay Kits Manual, available from <http://www.perkinelmer.com/category/alpha-surefire-kits>