



## FLUORESCENT PANELS

### Introducing: Fluorescent Panels Targeted For Your Research

Choosing the fluorescent probes you need for your research has never been easier. PerkinElmer offers a comprehensive suite of ready-to-use in vivo fluorescent reagents to help you get the most out of your imaging studies. Our new fluorescent panels bundle pre-validated, well-known and well-published imaging agents such as ProSense®, MMPSense®, and AngioSense® to enhance your molecular imaging data to gain a better understanding of disease and its progression.

#### Use Fluorescent Panels to help you:

- Monitor, evaluate and characterize disease pathways
- Gather more complete molecular imaging data for specific disease areas
- Save time in researching and selecting the best fluorescent probes for your research study

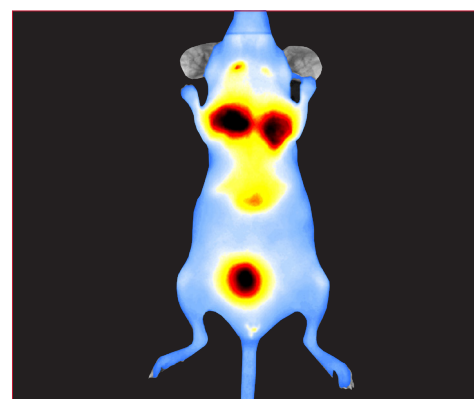


Figure 1. Bioware® 4T1 tumor cells (mouse breast adenocarcinoma) using MMPSense 680 fluorescent probe in a nu/nu mouse model.

Fluorescent Panel	Used To	Panel Contents		
Arthritis Panel	Detect molecular players in arthritis pathology	AngioSense 750EX CAT B 750 FAST	CAT K 680 FAST MMPSense 680	OsteoSense® 680EX ProSense 680
Tumor Metabolism Panel	Non-invasively measure tumor microenvironment biology for early detection of treatment-induced biological changes	AngioSense 680EX Annexin-Vivo™ 750 BombesinRSense™ 680	FolateRSense 680 MMPSense 750 FAST	ProSense 680 Transferrin-Vivo™ 750
Toxicology Panel	Detect molecular players and measure early changes in drug-induced injury	AngioSense 680EX Annexin-Vivo 750	MMPSense 750 FAST* ReninSense™ 680 FAST	Transferrin-Vivo 750
Oncology Panel	Non-invasively characterize the tumor environment to assess biological changes associated with disease progression or treatment efficacy	AngioSense 680EX FolateRSense™ 680	IntegriSense 750 MMPSense 750 FAST	ProSense 750 EX
Inflammation Panel	Quantify inflammation biology, particularly in longitudinal studies for understanding disease pathogenesis	AngioSense 680EX FolateRSense 680	IntegriSense 680 IntegriSense 750 MMPSense 750 FAST	Neutrophil Elastase 680 FAST ProSense 750 FAST
Vascular Panel	Characterize biological changes associated with vascular injury and disease	AngioSense 680EX CAT B 680 FAST	IntegriSense 680 MMPSense 750 FAST	ProSense 750 FAST
Featured Probes Pack	Approach different research areas by sampling our most popular and published fluorescent probes	AngioSense 680EX FolateRSense 680	IntegriSense 750 MMPSense 750 FAST	ProSense 680 VivoTag™ 680XL Protein Labeling Kit
Sample Pack	Combine fluorescence and bioluminescent imaging by sampling our most popular and published fluorescent probes, as well as ready-to-use injectable luciferin for bioluminescent imaging	AngioSense 680EX IntegriSense™ 750	MMPSense 750 FAST ProSense 750 EX	XenoLight® RediJect™ D-Luciferin

\*2 MMPSense are provided for the Annexin/MMPSense/Transferrin cocktail as detailed in the Fluorescent Panel User Guide.

Component Function	Fluorescent Agent	Fluorescent Panel							
		Arthritis (NEV20003)	Tumor Metabolism (NEV20015)	Toxicology (NEV20016)	Oncology (NEV20005)	Inflammation (NEV20013)	Vascular (NEV20014)	Featured Probes (NEV20011)	Sample Pack (NEV20000)
Vascular probe: leaks into sites of edema	AngioSense 680 EX		X	X	X	X	X	X	X
	AngioSense 750 EX	X							
Pan-cathepsin activatable probe: lysosomal marker of inflammatory cells	ProSense 680	X	X					X	
	ProSense 750 EX				X				X
	ProSense 750 FAST					X	X		
Pan-MMP activatable probe: secreted marker of inflammatory cells, bone/cartilage degradation	MMPsense 680	X							
	MMPsense 750 FAST		X	X	X	X	X	X	X
Bone turnover targeted probe: detects areas of exposed hyroyapatite	OsteoSense 680 EX	X							
Cathepsin k activatable probe: secreted marker of osteociasts, bone degradation	CAT K 680 FAST	X							
Cathepsin B activatable probe: lysosomal marker of inflammatory cells	CAT B 680 FAST						X		
	CAT B 750 FAST	X							
Folate receptor targeted probe: marker on inflammatory cells; metabolic marker on tumor cells	FolateRSense 680		X		X	X		X	
Bombesin receptor targeted probe: metabolic marker on tumor cells	BombesinRSense 680		X						
Transferrin receptor targeted probe: metabolic marker on tumor cells	Transferrin-Vivo 750		X	X					
Death/apoptosis probe: detects surface phosphatidylserine increase on dying cells	Annexin-Vivo 750		X	X					
Renin activatable probe: marker of tissue renin-angiotensin system activity	ReninSense 680 FAST			X					
$\alpha$ V $\beta$ 3 intergrin targeted probe: marker on activated tumors and neovasculature	IntegriSense 680					X	X		
	IntegriSense 750				X	X		X	X
Neutrophil elastase activatable probe: secreted protease from neutrophils	Neutrophil Elastase 680 FAST					X			
Labels small molecules, proteins, antibodies, nanoparticles, or other marcomolecules	VivoTag 680XL Protein Labeling Kit							X	

Panels are not open to substitution. For ordering information on individual components, please visit <http://www.perkinelmer.com/category/in-vivo-imaging-reagents> or contact your PerkinElmer Account Manager.

PerkinElmer, Inc.  
940 Winter Street  
Waltham, MA 02451 USA  
P: (800) 762-4000 or  
(+1) 203-925-4602  
[www.perkinelmer.com](http://www.perkinelmer.com)



For a complete listing of our global offices, visit [www.perkinelmer.com/ContactUs](http://www.perkinelmer.com/ContactUs)

Copyright ©2017-2018, PerkinElmer, Inc. All rights reserved. PerkinElmer® is a registered trademark of PerkinElmer, Inc. All other trademarks are the property of their respective owners.