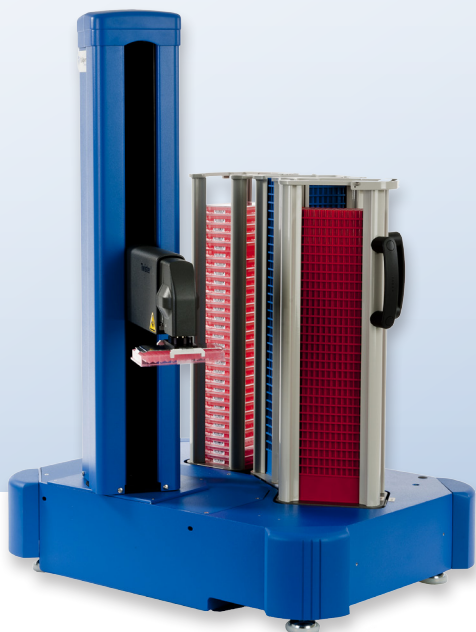


Integrated Systems

Key Benefits:

- Compatible with hundreds of microplate-based instruments with five axes of motion
- Up to 400 plate capacity for walkaway operation
- Compact, benchtop profile



Easily Integrate Multiple Assay Systems with the Twister III Microplate Handler

Introduction

The Twister III Advanced Capability Microplate Handler has been designed to address the need for a microplate handler with multiple instrument capability and integral plate and tip storage capacity.

When combined with iLinkPro method building and scheduling software, the Twister III is utilized as the heart of a completely automated yet cost-efficient integrated assay system. iLinkPro software easily connects multiple instruments—liquid handler, washer or readers-- in a simple and concise sequence of steps, so it only takes a moment to setup an automated workstation.

This cost-effective microplate handler provides a time saving alternative to stackers and a money-saving alternative to larger, more complex integrated systems.

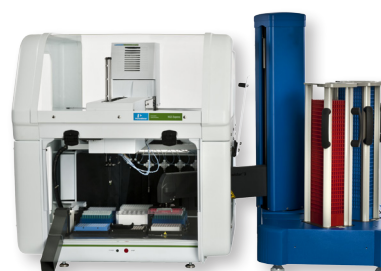


Figure 1. Twister III with the JANUS NGS Express liquid handling workstation.

The Twister III microplate handler's telescoping arm and rotating wrist joint make it possible to access the x-y index positions of almost any liquid handling deck. The flexibility of the system's compact footprint and removable stacks offer effortless expansion or contraction so the system never takes up more valuable laboratory space than is necessary.



Figure 2. Staccato Protein Workstation. The Twister is the center piece of a fully automated system that easily integrates a Sciclone G3 liquid handler, two thermocyclers, a centrifuge, and an integrated LabChip® GXII.

The Twister III provides extended hours of walk away automation so you can make better use of your research time. Connect to hundreds of adapters and instruments that make plate handling a snap including:

- Plate Readers / Plate Washers
- PCR and qPCR Instruments
- High Content Screening / Cellular Imaging
- Incubators and Plate Storage
- Liquid Handling / Dispensing
- Plate Sealers / Plate Piercing

Storage Capacity

Labware	Rack Capacity
SBS Standard plates without lids	38 plates
SBS Standard plates with lids	30 plates
Deepwell block (~1ml)	12 blocks
Half height deepwell block (~500µl)	20 blocks
Nested tips	31 racks
Boxed tips	10 racks

Note: Twister III stack capacity will vary based on the exact plate make used

Specifications:

Minimum Reach	12.0"
Arm Travel	8.5" horizontal 22.0" vertical
Wrist Rotation	±135° (270° total)
Protrusion Beyond Rotation Point	1.5" (flush with plate edge)
Turret Rotation	340° with 20° hard stop
Turret Diameter	7.0"
Turret Height	38.0"
Tower Base Dimensions	10.0" diameter
Minimum Reach Height	6.5"
Maximum Reach Height	28.0"

Ordering Information

134584	Twister III	Round Base 5 axis cylindrical robot
134570	Twister III	Square base 5 axis cylindrical robot.
76840	Extra Pod 3 racks	(for Round base only)